



KONICA MINOLTA

# **bizhub PRO** 1100

**Production Printing System**




Giving Shape to Ideas

# Enduring beauty and strength. At the apex of black & white printing on demand.

The compact bizhub PRO 1100 is built for productivity, complemented by beauty and strength, essential in the on-demand printing world. It embodies the ideals of design, image quality, and convenience, boosting business performance.







## Productivity and operability support a variety of demands, from in-house printing to professional printing services

bizhub PRO 1100 possesses the reliability and high precision required of on-demand printing systems. At the same time, its refined operability increases productivity in a variety of applications, from professional use (printing companies) to a centralised reprographics department.



### Use as a high-speed system for CRD

Produce high volumes of office documents with confidence. Digitise documents with the bizhub PRO 1100's high-speed scanner. Compatibility with bizhub office multi-function products as well as collaboration with applications have been enhanced. The security essential to an office environment, plus environmental-friendliness, are given full consideration.



### Smart and compact high-performance system for professional printing

bizhub PRO 1100 offers the robustness and reliability that professional users demand. In addition, configuration flexibility satisfies a variety of work and business requirements.

Given the high image quality expected from the bizhub PRO line, the bizhub PRO 1100 is the ideal monochrome system for the printing industry. And it's easy enough for anyone to operate.

# ***bizhub PRO*** **1100**

# Reliable and easy to control over the long life ahead

## 100 ppm output

High-impact printing at 100 ppm<sup>\*1</sup>, including booklets and impositions. This enables finishing<sup>\*2</sup> functions to increase productivity further.

<sup>\*1</sup> Using 40–216 gsm paper (restrictions apply depending on paper weight and printing environment) with A4 long-edge feed.

<sup>\*2</sup> Optional



## Large capacity with a maximum 9,000 sheets

Print a maximum of 9,000 sheets by combining the main unit's standard 3,000-sheet capacity with the 3-tray PF-709<sup>\*3</sup> (6,000 sheets). Other trays supply paper during operation to prevent interruption of production.

<sup>\*3</sup> Optional

<sup>\*</sup>Using 80 gsm paper



## Sturdy design supports high-volume production

bizhub PRO 1100 has adopted the same kind of sturdy and durable body found in printing systems for professional use.

Count on stable reliability during continuous operation.

Consumables, too, are designed for a long life, reducing the frequency of replacement.



## High-speed duplex colour scanner

Scan A4 colour documents at the rate of 90 opm<sup>\*4</sup>.

For double-sided originals, two independent scanner sensors make high-speed 180 opm<sup>\*4</sup> scanning possible.

Network scanner functions enable speedy digitisation of documents.

<sup>\*4</sup> For 300 dpi originals



## Easy-to-understand 15-inch control panel

bizhub PRO 1100 is equipped with a highly visible 15-inch LCD control panel. An array of functions, including ticket editing, folding and stapling, come with the same graphical user interface as bizhub PRESS colour devices. Operating mistakes are reduced and work efficiency is enhanced.



## Replace high-capacity toner bottle even while printing

The high-capacity toner bottle is good for approximately 82,000 pages<sup>\*5</sup>. bizhub PRO 1100 also features a new toner bottle door, allowing the toner to be replaced even during printing to boost work efficiency.



<sup>\*5</sup> Based on A4-size 5% print coverage.

## Highly visible LED lights

When it is difficult to hear the bizhub PRO 1100, optional multi-information LED lights display printing and paper tray conditions with a combination of four colours.



## Compact space-saving design

The compact design of the bizhub PRO 1100 allows installation in a variety of locations. Minimum width is 1,860 mm when the output tray OT-507<sup>\*6</sup> is fitted on the main unit. When fitted with staple finisher FS-532,<sup>\*6</sup> the system is approximately 2,398 mm wide.

<sup>\*6</sup> Optional





# Product features that will **grow a business**

## Extensive paper compatibility

"Up to 324 × 463mm-size paper is supported with crop marks printable on A3 documents." Given the standard support for paper weights (40 – 350 gsm or 50 – 300gsm for duplex printing), a wide range of paper weights can be used. Diverse paper types are also supported, from fine paper to tab stock. Postcard printing is possible by installing MB-507\*<sup>1</sup> or PF-709.\*<sup>1</sup>

\*<sup>1</sup> Optional

## Examples of output

Pamphlet



In addition to elegant printing and folding are supported\*<sup>2</sup> by the options.

Manual



Saddle-stitched booklet printing\*<sup>2</sup> is supported, making the bizhub PRO 1100 suitable for high-volume printing.

Invoice



Compatible with thin paper from 40 gsm. Variable printing is supported.

Business cards



Imposition base printing on thick stock such as Kent paper also is possible.

Certificate



Besides thick stock, traditional stock for certificates\*<sup>3</sup> can also be used for printing.

\*<sup>2</sup> When optional SD-510 is installed.

\*<sup>3</sup> Coated or beaten-foil paper is not compatible.







# Flexibility that feeds optimisation

## Multi Bypass Tray and output tray for convenient system configuration

The printing system can be customised with flexible options, including bypass Tray MB-507, which eases the use of different paper for small-lot jobs, and output tray OT-507 for printing environments that do not require a finisher.

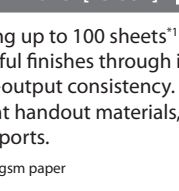

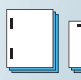
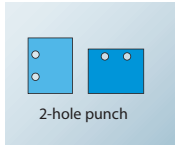



### Paper handling

Standard features		Options		
	<div>Expand</div>			
<b>Main Unit Tray</b>		<b>A4 Large Capacity Unit [LU-411]</b>	<b>A3 Large capacity Unit [LU-412]</b>	<b>3-tray Paper Feeder Unit [PF-709]</b>
3,000 sheets* <sup>1</sup> (1,500 sheets × 2 trays)		Paper capacity4,500 sheets* <sup>1</sup>	4,000 sheets* <sup>1</sup>	6,000 sheets* <sup>1</sup> (2,000 sheets × 3-tray)
40 to 300 gsm		Paper weight40 to 300 gsm	40 to 300 gsm	40 to 350 gsm* <sup>2</sup>
[Min.] 182×139 mm [Max.] 324×463 mm	Paper size	[Min.] 250×176 mm [Max.] 314×229 mm	[Min.] 203×195 mm [Max.] 324×483 mm	[Min.] 95×139 mm [Max.] 324×463 mm

\*<sup>1</sup> Paper capacity based on 80 gsm paper \*<sup>2</sup> 40 to 300 gsm for upper and lower trays

### Finishing

 <b>Staple Finisher [FS-532]</b> *Optional Stapling up to 100 sheets* <sup>1</sup> for beautiful finishes through improved paper-output consistency. Create elegant handout materials, proposals and reports. * <sup>1</sup> A4 80 gsm paper Corner stapling 2-point stapling Staple cutter Cuts excess staple needles so they do not overlap each other.	Expand	 <b>Saddle Stitcher [SD-510]</b> *Optional Saddle stitching is effective in lowering production cost. Multiple half-fold and tri-fold functions for direct mailing and circulars are available. Half-fold Tri-fold
 <b>Punch and Z-folding Unit [ZU-608]</b> *Optional Provides Z-folding function in addition to punching. Perfect for creating booklets without the need to reduce detailed illustrations. 2-hole punch Z-fold Z-fold + 2-hole punch	Expand	 <b>Punch Kit [PK-522]</b> *Optional Internal punch kit for FS-532. Choose punch holes left/right or up/down from the set direction of the paper for efficient finishing. 2-hole punch
		 <b>Post Inserter [PI-502 TypeB]</b> *Optional Adds cover and insertion pages to documents. Two-level trays allow these pages to be added simultaneously. Manual operation is also possible. Insertion sheet Cover sheet * Mount kit MK-732 is required.



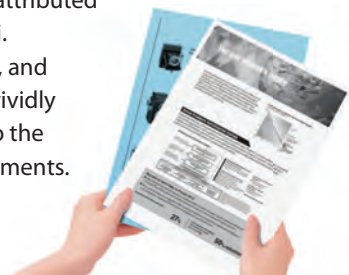
# Evolved **imaging** technology that invites **repeats**



## Acclaimed 1,200 dpi resolution

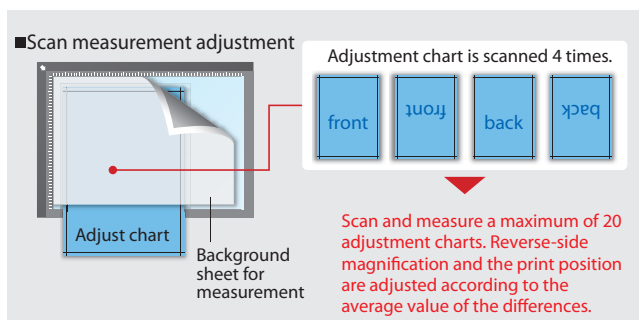
High-resolution printing is attributed to a real output of 1,200 dpi.

Thin lines for tables, graphs, and multi-gradient images are vividly reproduced, contributing to the creation of persuasive documents.



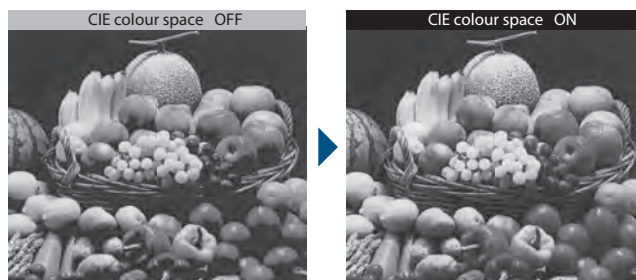
## Convenient front-to-back registration adjustment

bizhub PRO 1100's front-to-back adjustment function automatically adjusts image position by using the original platen surface. The front-to-back side position and discrepancies in magnification are easily corrected, vastly improving the efficiency of registration adjustment.



## Rich expressions of colour space

When colour documents are printed, the input image is converted first into CIE colour space and then into the main unit's colour space. The main unit processes rich gradients while maintaining high productivity.



## Screen versatility

Three types of FM screen (2 resolutions × 3 patterns) are available based on the content of the document. In addition, three new FM screens leveraging high resolution are available. Print quality of even greater resolution can be produced by using the optimal screen for the output content.



# Advancing configurations to the desired level

## Direct printing with Hot Folders

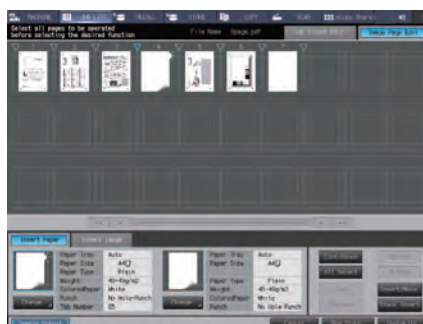
Print PDF/TIFF files without launching applications. Simply drag and drop into an icon or a shared folder. Prepare multiple Hot Folders for quick printing without having to change settings each time.

\*When icons are used, the client needs to install PageScope Direct Print (included) (Microsoft Windows OS only).



## Job ticket editing

Edit job ticket details, then view the output image. A sample can be printed. Complex and delicate print jobs are made more efficient thanks to flexible job management.



Page edit screen

Change the configuration of the insert page and paper settings. Confirm details easily with the preview display.

Job ticket edit screen

Change detailed output settings, such as paper type and number of copies.



## Color Centro

Color Centro is standard on the bizhub PRO 1100. The same software is used on colour production systems for colour management. Flexibly adjust image quality on the PC by adjusting separate tone curves for images and text/graphics.

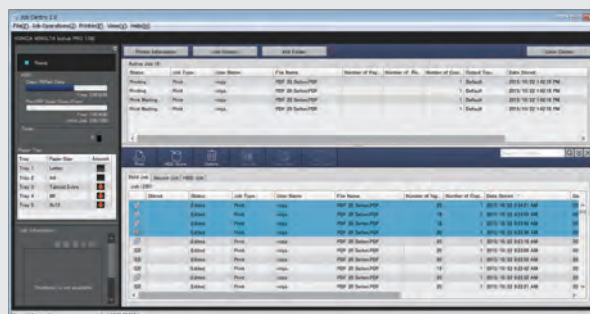


Tone curve adjustment

Fine-tune to preferred contrast and brightness.

## Job Centro

Manage options from the PC. The easy-to-use interface is compatible with the bizhub PRO 1100's control panel and printer driver, making operation more efficient. Color Centro can also be launched from Job Centro for seamless management.



# Authentication and **collaboration** functions for the future

## User authentication

Besides the main unit's authentication function, PageScope Authentication Manager\*<sup>1</sup> unifies management of user information with an external server such as Active Directory. Security also is strengthened without loss of work efficiency by the non-contact IC card authentication system. Choose the work style suited to the size and environment as the system is linked with employee room entry.

\*<sup>1</sup> Optional

\* Optional IC card authentication unit AU-2015 is required.



## Office equipment connectivity

bizhub PRO 1100's compatibility with bizhub Connector assures office equipment connectivity. From the bizhub PRO 1100's control panel, register applications on the system to connect directly to cloud services\*<sup>2</sup> and intra-organisation Sharepoint 2007/2010 services. OpenAPI ver4.1 enables authentication, billing, pull printing, and other solution applications.

\*<sup>2</sup> Google Drive, Gmail, Evernote





# Our approaches to resource **preservation** and **protection**

## Use of recycled materials

Konica Minolta has developed recycled PC/PET materials with its proprietary chemical processing technologies. Our active use of recycled materials contributes to effective preservation of resources and promotes protection of the environment.



## TEC standard exceeded

The bizhub PRO 1100 is designed to consume about 40% less energy than ENERGY STAR's Typical Electricity Consumption (ver 2.0) value. The lower TEC value greatly reduces CO<sub>2</sub> emissions.

## High image quality and eco-friendly toner

Konica Minolta's Simitri HD toner technology uses plant-based materials as a toner element. The toner powder fuses at low temperatures, reducing energy consumption. The environmental impact is taken into account — from toner production and customer use to disposal.

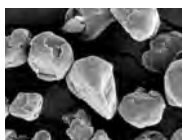
## Compliance with global environmental standards

bizhub PRO 1100 meets a variety of domestic and foreign environmental standards, including the international ENERGY STAR program and Japan's Act on Promoting Green Purchasing. We support the environment with a broad perspective.

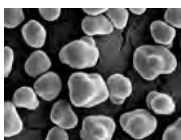


## EPEAT Gold Rating

We have been awarded "Gold" certification by EPEAT (Electronic Products Environmental Assessment Tools), a US-based evaluation system for market development and sales promotion of eco-friendly products. Gold-rated products must satisfy 75% or more of EPEAT's criteria.

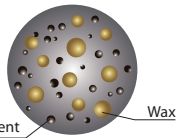


Pulverised toner



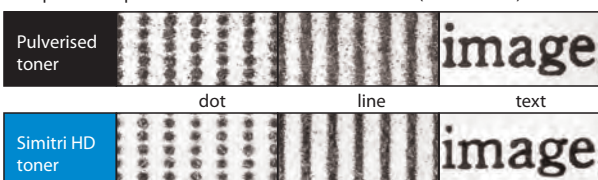
Simitri HD toner

Composition of Simitri HD toner



**Simitri HD**  
High Definition Polymerized Toner

Comparison of pulverised toner and Simitri HD toner (internal test)



# Specification

## bizhub PRO 1100 General Specifications

### Main Unit

Type		Console
Resolution	Scan	600 × 600 dpi
	Print	1,200 × 1,200 dpi
Gradation		256
Original Type		Sheets, Books, Objects
Max. Original Size		A3 (11" × 17")
Memory Capacity	DIMM	8 GB
	HDD	1TB
Output Size (S: Short edge feed) <input type="checkbox"/>		SRA3, A3 to B5, A5, B5S, Tab paper, Custom 182 × 139 mm (Using small size guides), to 324 × 463 mm
Image Loss		Max. 3 mm or less for top edge, Max. 2 mm or less for bottom/right/left edges
Warm-Up Time		390 sec. or less
First Copy Out Time*1		3.4 sec. or less
Copy / Print Speed (A4)		100 ppm
Copy Magnification	Fixed Same Magnification	1:1 ± 0.5% or less
	Scaling Up	1:1.154/1.224/1.414/2.000
	Scaling Down	1:0.866/0.816/0.707/0.500
	Preset	3 types
	Zoom	25 to 400% (in 0.1% increments)
Paper Capacity (80gsm)		Standard: 1,500 sheets × 2
Paper Weight	Standard	40 to 300 gsm (Limitations to paper types apply)
	Option	40 to 350 gsm (Only available for middle tray of PF-709)
Multiple Copy		1 to 9,999 sheets
Auto Duplex (S: Short edge feed) <input type="checkbox"/>		Non-Stack
Power Requirements		SRA3, A3 to B5, A5, B5S 220 to 240 V/15 A
Max. Power Consumption (Main unit + PF-709 + FS-532)		3.6 kW or less
Dimensions [W] × [D] × [H]		990 × 910 × 1,160 mm (39" × 35-3/4" × 45-3/4") (Main unit + ADF) 1,211 × 910 × 1,454 mm (47-3/4" × 35-3/4" × 57-1/4") (including operation panel)
Weight		340 kg (749-1/2 lb) (Main unit)
Space Requirements [W] × [D]		2,634 × 2,060 mm (103-3/4" × 81-1/4") <Main unit + FS-532 + LU-411>

\*1 A4 long edge feed full size/using the first tray/scanning from the original glass surface.

## bizhub PRO 1100



Model shown is 1100 with options.



\*1 Optional

For more information please visit the bizhub Web site at

<http://www.biz.konicaminolta.com/production/1100/index.html>



Product appearance, configuration and/or specifications are subject to change without notice.

This product is not available for some countries or regions.



KONICA MINOLTA, the KONICA MINOLTA logo and symbol mark, "Giving Shape to Ideas", bizhub, bizhub PRO, bizhub PRESS, Simitri, Simitri HD, Simitri with Biomass, and Konica Minolta Optimised Print Services and their respective logos are registered trademarks or trademarks of KONICA MINOLTA, INC. All other brands and product names are registered trademarks or trademarks of their respective companies or organisations.

### ISO15408 (EAL Level 3) Certification (Currently under application)

These products comply with the security requirements of ISO15408 (EAL Level 3).

\* The ISO 15408 certification applies only to IT security capabilities. This certification is NOT a product guarantee.



From consulting, system design, to operations, Konica Minolta offers total support to optimise your office output environment.

<http://www.biz.konicaminolta.com/services/ops>

### Requirements for safe use

- Please read and follow the instruction manual to ensure safe operation.
- Only operate using appropriate power supply and voltage.
- Connecting the earth wire to an inappropriate place may cause explosion or electric shock. Please connect accordingly (Taiwan and the Philippines only).

### KONICA MINOLTA, INC.

2-7-2 Marunouchi Chiyoda-ku, Tokyo, Japan  
<http://www.biz.konicaminolta.com>

9251-3235-01 Printed in Japan