

KIP 71 SERIES

INNOVATIVE VERSATILITY

*Experience the most
advanced technology in
technical printing*





ADVANCED TECHNOLOGY

***KIP 71 Series Systems
are the leading
advanced solutions for
technical printing
professionals***



Perfect View

Adjustable
12" touchscreen
for the ideal
viewing and
management of
system features

KIP has expanded the range of the KIP 71 Series Systems to offer innovative productivity and configuration versatility in a space saving design.

The KIP 71 Series have proven reliability delivering high quality, durable prints at a single touch.



CONFIGURATION VERSATILITY

Space Saving Performance

Near Wall Installation

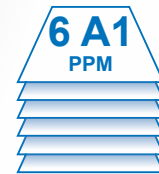
Fits Where You Need It

Innovative productivity and configuration versatility expands the range of the KIP 71 Series MFP systems to meet the needs of technical printing professionals.

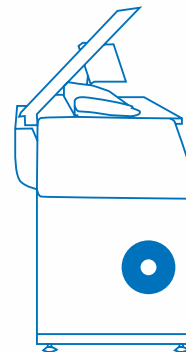


KIP 71 SERIES

Range of Productivity & Configuration



360 PRINTS PER HOUR



KIP 7171



KIP 7172

KIP 71 SERIES TOUCHSCREEN

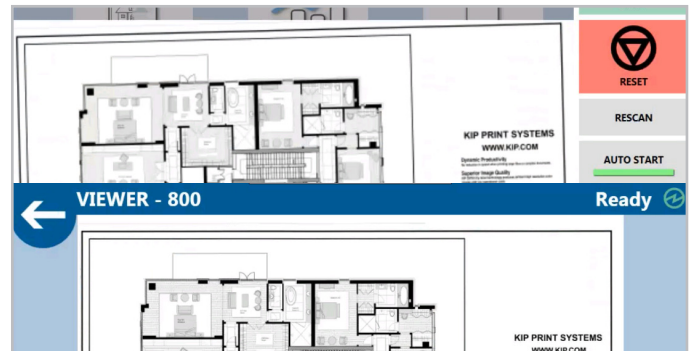
Print, Copy and Scan Brilliantly

The KIP touchscreen has smart tablet functions that offer unmatched, easy, and intuitive features to brilliantly automate Print, Copy, and Scan workflow. Preview vivid real-time color images, and use KIP's 8-point Area of Interest for simplified on-screen image editing. Auto de-skew technology ensures the perfect scan or copy to enhance quality and improve workflow. Use the power of KIP Cloud Connect for project collaboration anytime, anywhere.

- 12" Smart-tablet simplicity
- Intuitive feature selection
- Vivid color image preview
- Cloud Connect
- Auto De-skew for copy and scan
- Area of Interest image editing
- Workflow automation templates
- One-touch access to features in 12 languages
- Pictorial feature guide
- Touchscreen articulates for the Perfect View



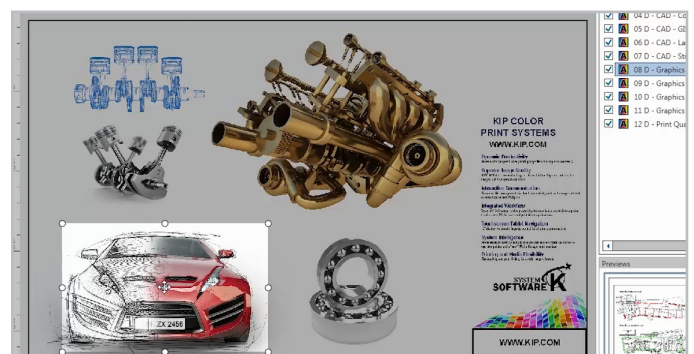
Smart Tablet Simplicity 12" Ultimate Color Display to Copy, Print and Scan with Vivid Color Image Previews and Intuitive Feature Selection for Easy Operation



Auto Deskew Image



Cloud Connect



Area of Interest



KIP 71 SERIES SOFTWARE APPLICATIONS

KIP IMAGEPRO One Application for all Wide Format Imaging

- Feature Rich Tool Selection
- High Definition Viewer
- Thumbnail Preview
- Quick Access Tool Bar
- Workflow Automation Templates
- Area of Interest
- Image Clean-up
- Easy Scanned File Renaming
- Secure Print

KIP Windows Driver

WHQL Certified

KIP AutoCAD Driver

Certified integrated printing from Autodesk

Printer Status SNMP

Anywhere, anytime centralized updates

KIP Accounting* – Turn printing into revenue. KIP Accounting consolidates control of user account data and printing rules for all imaging functions.

KIP Cost Center* – Automatically generates visually attractive production reports for user, project and department level accounting data.

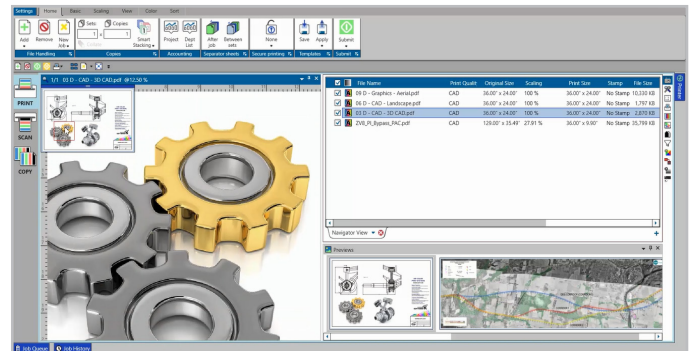
KIP Card Reader System* – Secures KIP systems using contactless card reading technology for copy, print and scan functions for workgroups.

KIP Digital Data Security Features

Proven to meet
Department
of Defense
specifications. Data
Encryption and Virus
Scanning compatible.



Exceptional Value - Unmatched Feature Performance
Included with KIP 71 Series Systems



High Definition Viewer

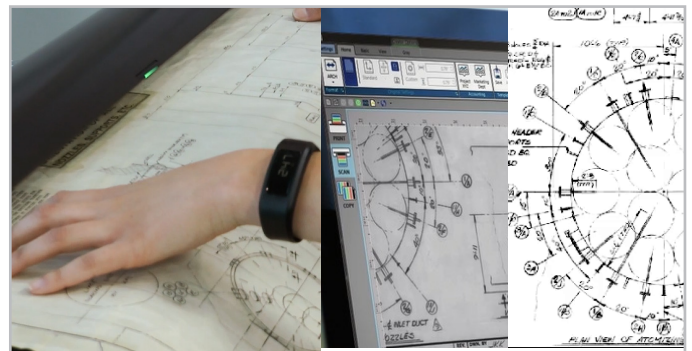
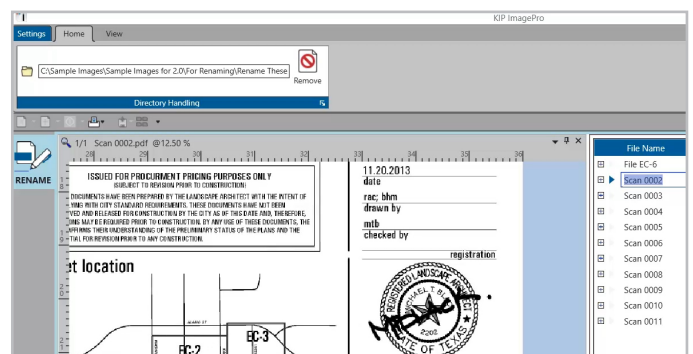


Image Clean Up
Before & After



Scanned File Renaming



**Optional*

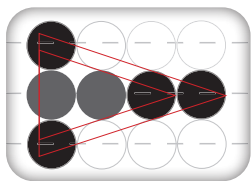
KIP 71 SERIES EXCLUSIVE TECHNOLOGIES

High Definition Print (HDP) Technology

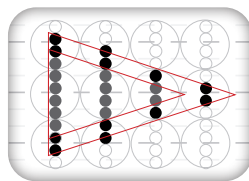
KIP HDP is a green technology that is 100% toner efficient, reducing the cost of printing and returning outstanding value and industry leading low cost of ownership. KIP Systems do not employ carriers, developers or waste receptacles that require disposal and replacement.

600 x 2400 dpi – High Resolution

KIP Systems feature crisp, 600 x 2400 dpi printing for sharper details and extremely smooth grayscale. This higher resolution allows the system to enhance curves, diagonal lines and arcs by smoothing out line edges with excellent precision.



600 dpi x 600 dpi



600 dpi x 2400 dpi

Consistent Print Quality

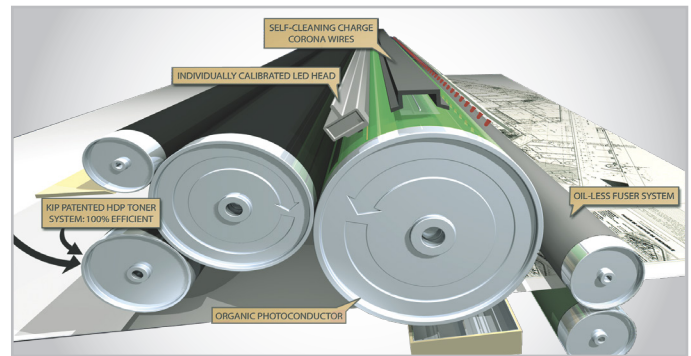
KIP Systems deliver solid blacks, smooth grayscale and uniform print quality from the first to the last page of a print job. Advanced technologies including automatic environmental adjustments and contact-based developer units keep your print quality on track through seasonal climate changes.

Media Capacity

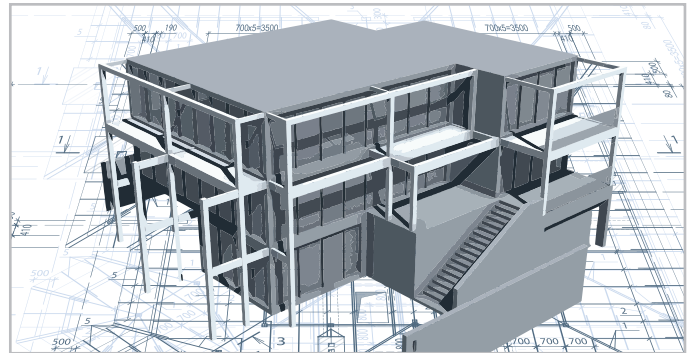
KIP Systems feature a user friendly “End Cap” design for easy loading of media rolls. Media drawers are auto-switching to ensure non-stop print production and maximum media versatility. View media status on the touchscreen.

Accurate Print Sets

KIP Systems provide precise cut lengths that conform to KIP sheet size specifications. Electronic monitoring of media while printing provides an accurate page cut length. Print jobs are produced at an identical sheet size, resulting in a professional presentation.



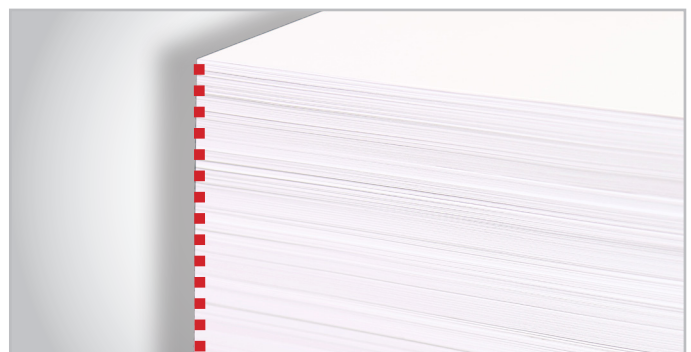
100% toner efficiency
Low cost of operation



Highest image durability



End caps for easy
changing of media rolls



KIP precision cutting
for accurate sheet sizes



KIP 71 SERIES INTEGRATED FINISHING

Document Automation

KIP integrated folding and finishing systems automate wide-format document finishing by providing folding, stacking and collation in a compact design.

KIP online stackers & folders intelligently communicate with KIP printers and are fully integrated with KIP software applications & print drivers to provide seamless workflow integration.



KIP 1200 Stacker

KIPFold 1600

The KIPFold 1600 offline compact folder is built tough for project or job site mobility, expanding document finishing capabilities. Gain folded packet versatility. Fan folded documents can be manually re-inserted to produce crisp cross folds to meet DIN, ANSI, or ARCH Standard Packet Sizes.



KIPFold 1600

KIPFold 1700

The KIPFold 1700 compact design is perfect for small workgroup spaces. Expand document finishing capabilities with single click automated fan folding and stacking. Powerful online two-way integration produces professional folded documents ready for distribution.



KIPFold 1700

KIPFold 1800

The KIPFold 1800 uses proven folding technology based on a precision roller design for high production print environments. KIPFold 1800 offers industry leading fold quality, exact fold delivery, precise packets, and crisp fan folded documents.



KIPFold 1800

KIPFold 2800

The KIPFold 2800 system automates wide-format document folding requirements by providing folding, stacking and collation in a compact design with quiet operation.

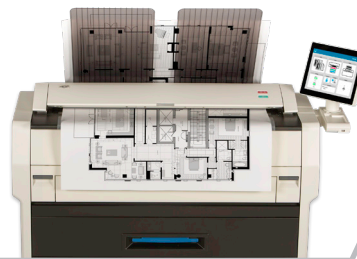


KIPFold 2800



KIP 71 SERIES

SPECIFICATIONS



General

Description	Monochrome wide format print/copy/scan with color scanner
Type	Electrophotography (LED) with organic photoconductor (OPC) and closed toner system
Range of Productivity	6 A1 per minute / 360 prints per hour
Warm Up Time (from cold)	Less than 2 minutes from standby
Configurations	MFP
Roll Options	2 Roll or 1 Roll
Output Delivery	Top / Optional Rear
Dimensions	1590 mm x 700 mm x 1510 mm
Weight	244 kg
Electrical Requirements	120V plus/minus 10%, 50/60Hz, 12A
Power Consumption (Standby)	500W
Power Consumption (Printing)	1,100W

Printer

Print Resolution	600 dpi x 2400 dpi
Roll Capacity	2 Roll or 1 Roll
Output Sizes Width	297-914 mm
Output Sizes Length	6 m (standard), 150 m based on media validation
Paper Weight	Bond 63-90 gsm, Vellum/Translucent Bond 80 gsm, film 75 gsm
Media Type	Bond / Vellum / Film

Controller

Controller Type	KIP System K Controller with Windows 10 Embedded
Memory	2GB DDR3 Standard - Upgradable to 4 GB
Hard Drive	Minimum 320 GB - Unlimited Upgrade
Supported File Type	DWF, PDF, PDF-A, HPGL 1/2, HP-RTL, Calcomp 906/907, CALS Group 4, TIFF Group 4, CIT/TG4, Grayscale TIFF, TIFF Packbits, PNG, JPEG

Scanner

Scanner Type	CIS
Scan Resolution	600 dpi
Scan Format	TIFF, Multipage TIFF, PDF, PDF-A, Multipage PDF, DWF, JPEG
Scan Destination	Local USB (removable media), Mailboxes (local), FTP, SMB Cloud: Google Drive/Dropbox/Box/OneDrive/SharePoint
Original Size Width	210 mm to 914 mm
Original Thickness	0.05 mm - 1.60 mm (image quality over 0.25 mm not guaranteed)

WWW.OFFICEIMPRESSIONS.CO.UK